

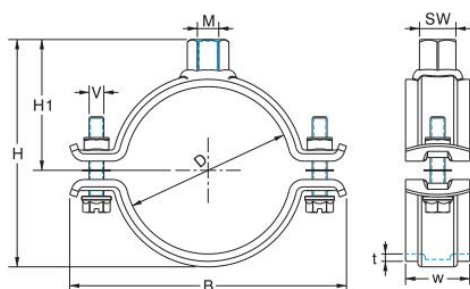
ZWARE MEURBEUGEL

Advantages/Benefits

- For the installation of pipes required for M&E Services and in plant constructions.
- **Pipe support for heavy duty loads purpose.**
- Stronger fastening latches for high load capacity.
- High-strength welding all around the connecting nut.
- **CO₂ welding for size up from 176-184mm.**

Technical Data

- Material: Steel 1.0332 acc. to DIN EN 10111
- Zinc plating: Electro zinc plated, $\geq 13\mu\text{m}$



Article Number	Clamping Range		Connecting Thread	Dimensions [mm]						Approvals		Pack Size [pcs]	Max. Rec. Load [N]
	D[mm]	[inch]		w x t	B	H	H1	SW	V	VdS	FM		
16002015	20-24	1/2	M10	30x2.5	66	44	27	17	M8x30	●	●	50	2500
16002020	25-30	3/4	M10	30x2.5	71	52	31	17	M8x30	●	●	50	2500
16002025	31-35	1	M10	30x2.5	77	57	33	17	M8x30	—	●	50	2500
16002032	40-45	5/4	M10	30x2.5	88	67	38	17	M8x30	—	●	50	2500
16002040	48-53	6/4	M10	30x2.5	96	75	42	17	M8x30	—	●	50	2500
16002050	60-65	2	M10	30x2.5	108	87	48	17	M8x30	●	●	50	2500
15002065	76-81	2 1/2	M10	30x3.0	135	135	105	58	M8x40	●	●	25	3500
15002080	88-93	3	M10	30x3.0	147	117	64	17	M8x40	●	●	25	3500
15002100	110-116	4	M10	30x3.0	171	140	75	17	M8x40	—	●	25	3500
15002125	140-148	5	M12	40x4.0	216	168	89	19	M12x40	●	●	10	5000
15002150	167-173	6	M12	40x4.0	242	193	102	19	M12x45	—	●	10	5000
15002200	219-225	8	M16 M20	40x4.0	294	248	131	24	M12x45	●	—	10	10000
15002250	267-273	10	M16 M20	40x4.0	343	343	296	155	M12x45	●	—	10	10000