

TUIMELBEUGEL

Advantages/Benefits

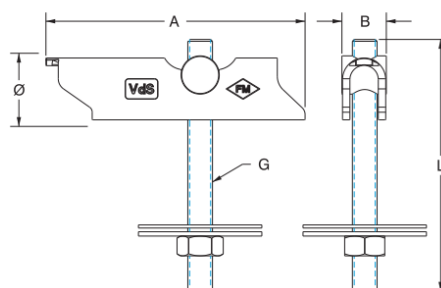
- For fixing pipes up to a nominal diameter of DN50 directly to ceilings made of trapezoidal sheet according to VdS/FM standards of as single point mounting solution.
- In cases where VdS or FM regulations are not applicable or in cases of ventilation systems, larger loads may be fixed via crossbars and by an appropriate number of toggle plugs.
- By turning the threaded rod, it is possible to make height adjustments.
- This threaded rod is secured and cannot be unscrewed completely.
- The Hypalon washer is weather-resistant and thus a crucial safety factor when sealing the mounting bore.

Technical Data

- Material: Steel 1.0332 acc. to DIN EN 10111
- Zinc plating: Electro zinc plated, $\geq 13 \mu\text{m}$

Note

- Permissible carrying capacity of the trapezoidal sheet has to be considered.
- *Type M10 for sprinkler systems approved by FM are on the request.



Article Number	Grub Screw G [mm]	Length of grub screw L [mm]	Fitting bore Ø [mm]	Dimensions [mm]		FM* Approved	VdS Approved	Pack Size [pcs]	Max. Rec. Load [N]
15006108	M8	100	22	84	14	—	●	100	800
15006100	M10	100	25	84	16	●	●	50	800
15006200	M10	200	25	84	16	●	●	50	800

