

## Grooved Cap XGQT06



### PRODUCT OVERVIEW

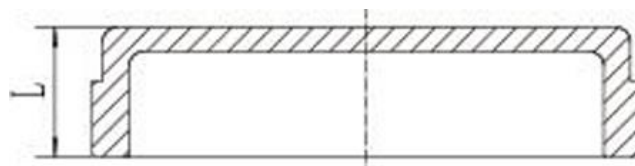
Grooved Fittings provide an economical and efficient method of changing direction, adding an outlet, reducing, or capping piping systems.

### SPECIFICATIONS

Ductile iron pipe couplings and fittings material confirming to ASTM A536 Grade 65-45-12.

Sizes :	5/4" to 12"
Working pressure :	See table below.
Ambient Temperature :	-34°C to 110°C
Gasket Material :	EPDM
Bolts and Nuts :	Quenched and tempered steel, ASTM A449
Finish :	Hot Dip Galvanised / RAL3000 Coated
Application :	Water based Fire suppression Systems
Installation :	Refer to installation Manual
Maintenance :	Visual inspection.

### TECHNICAL DRAWING



## Grooved Cap XGQT06

### DIMENSIONS

Article number RAL3000	Article number GALVA	Nominal size (mm/in)	Pipe O.D. (mm/in)	Working pressure psi/Mpa
70000030	60000030	32 1¼	42.4 1.669	300 2.07
70000031	60000031	40 1½	48.3 1.900	301 2.08
70000032	60000032	50 2	60.3 2.375	302 2.09
70000033	60000033	65 2½	76.1 3.00	303 2.10
70000034	60000034	80 3	88.9 3.500	304 2.11
70000035	60000035	100 4	114.3 4.500	305 2.12
70000036	60000036	150 6	168.3 6.625	306 2.13
70000037	60000037	200 8	219.1 8.625	307 2.14
70000038	60000038	250 10	273 10.75	308 2.15
70000039	60000039	300 12	323.9 12.750	309 2.16

## Grooved Cap XGQT06

### RECOMMENDED BOLT TORQUE RANGE

Always use factory supplied bolts and nuts for assembly of the couplings. Shown below are the general recommended torque ranges for common sizes of carbon steel bolts. Never exceed the recommended torque range by more than 25% as excessive torque can lead to joint failure, personal injury and property damage. Always depressurize and drain the piping system before attempting disassembly, adjustment or removal of any piping component. Follow installation instructions for proper assembly of all VOCLA components. For questions contact VOCLA.

BOLT SIZE		PROPER TORQUE RANGE	
MM	IN	NM	LBS-FT
M10	3/8"	40-50	30-40
M12	1/2"	120-150	90-110
M16	5/8"	140-180	100-130
M20	3/4"	200-270	150-200
M22	7/8"	240-300	180-220
M24	1"	270-340	200-250
-	1 1/8"	-	225-275

### APPROVALS

